

LIKE KENNY

AFRO-CUBAN

♩ = 120

34

2 C $B\flat_{MIN7}$ $G\flat_{MA7(\#11)}$ LIKE KENNY $B\flat_{MIN7}$ $G\flat_{MA7(\#11)}$ BASS

38

42 ¹ $B\flat_{MIN7}$ $G\flat_{MA7(\#11)}$ $C_{MIN7(b5)}$ $F7_{ALT}$

46 ² $B\flat_{MIN7}$ $C_{MIN7(b5)} F7_{ALT}$ $B\flat_{MIN7}$

50 $B\flat7$ $B\flat7(b9)$ $E\flat_{MIN7}$

54 $A\flat7$ $A\flat7(b9)$ $D\flat_{MA7}$ $C_{M7(b5)}$ $F7_{ALT}$

58 $B\flat_{MIN7}$ $G\flat_{MA7(\#11)}$ $B\flat_{MIN7}$ $G\flat_{MA7(\#11)}$

62 $B\flat_{MIN7}$ $C_{MIN7(b5)} F7_{ALT}$ $B\flat_{MIN7}$

66 C $B\flat_{MIN7}$ BACKGROUNDS $G\flat_{MA7(\#11)}$ $B\flat_{MIN7}$ $G\flat_{MA7(\#11)}$ BACK TO C FOR MORE SOLOS

70 ¹ $B\flat_{MIN7}$ $G\flat_{MA7(\#11)}$ $C_{MIN7(b5)}$ $F7_{ALT}$

74 ² $B\flat_{MIN7}$ $C_{MIN7(b5)} F7_{ALT}$ $B\flat_{MIN7}$

78 $B\flat7$ $B\flat7(b9)$ $E\flat_{MIN7}$

82 $A\flat7$ $A\flat7(b9)$ $D\flat_{MA7}$ $C_{M7(b5)}$ $F7_{ALT}$

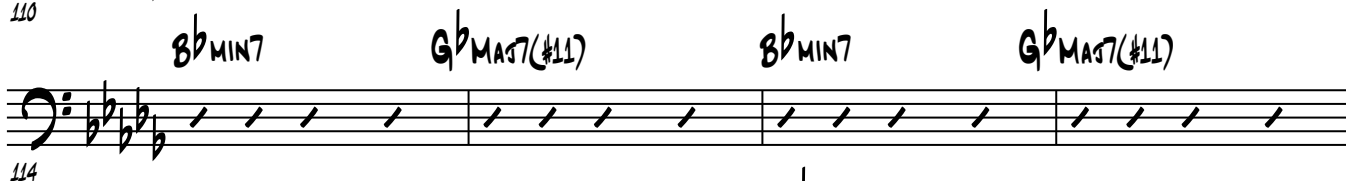
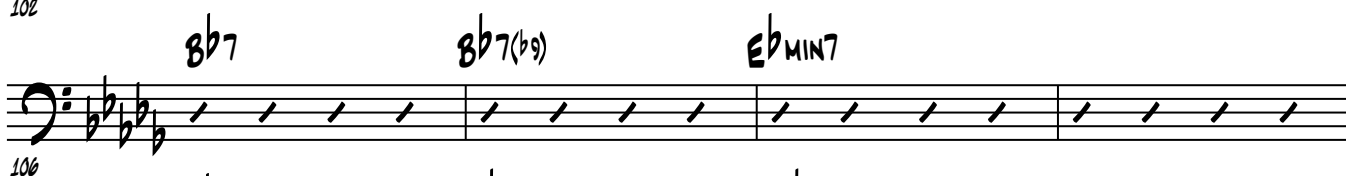
BASS

 $B^b \text{MIN7}$ $G^b \text{MA7}(\#11)$

LIKE KENNY

 $B^b \text{MIN7}$ $G^b \text{MA7}(\#11)$

3



131

134

137

140

143

145

149

153

157

161

165